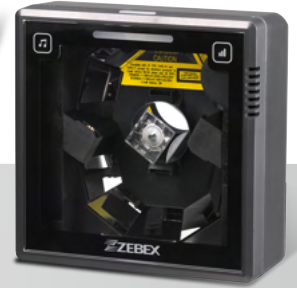


Z-6182 Series

Advanced Dual-Laser Omnidirectional Scanner



The Z-6182 Series is a compact vertical scanner empowered with the unique dual-laser technology, enabling 40 scan lines at a rate of 3,600 scans per second. Along with ZEBEX proprietary Z-SCAN+ hardware decoding technology, the Z-6182 Series guarantees unbeatable decoding speed and accuracy, the best choice for high-traffic applications, including hypermarket, healthcare, warehouse management and manufacturing process control.

- Aggressive scanning performance
- Instant “two-way object-fly-by” scan reaction
- Large scan field
- Barcode stitching capable
- Built-in EAS antenna and expandability for a FRFID reader (optional)
- Easy on-site configuration and upgradeability

1. Volume and tone control
2. Multi-interface support



OPERATIONAL

Light Source	Dual 650 nm visible laser diodes (VLD)	
Depth of Field	Z-6182 GT	
	5 mil: 0 – 55 mm	7.5 mil: 0 – 120 mm
	10 mil: 0 – 170 mm	13 mil: 0 – 200 mm
	20 mil: 0 – 280 mm	
	Z-6182 (with EAS)	
	5 mil: 0 – 55 mm	7.5 mil: 0 – 150 mm
	10 mil: 0 – 200 mm	13 mil: 0 – 240 mm
	20 mil: 0 – 320 mm	
	(Note : DOF may vary depending on environment condition and barcode quality.)	
Scan Line	40	
Scan Pattern	10 directions of scan field	
Scan Rate	3,600 scans per second	
Print Contrast	45% @ UPC/EAN 100%	
Indicator	Two-color LED (blue & red)	
Beeper Operation	Programmable tone & volume	
System Interface	Keyboard, RS-232, HID USB, USB Virtual COM, OPOS, JPOS	

PHYSICAL

Dimension	152.5 x 152.0 x 82.0 mm
Weight	685 g (without cable)
Cable	Standard 2M straight

POWER

Input Voltage	9 VDC ±10%
Power Consumption	4.05 watts
Operating Current	440 mA @ 9V (Typical)

REGULATORY

Laser Class	CDRH Class IIa; IEC 60825 Class 1
EMC	CE EN55022 B, FCC Part 15 Class B, VCCI, BSMI

ENVIRONMENTAL

Operating Temperature	0°C ~ 40°C (32°F ~ 104°F)
Storage Temperature	-20°C ~ 60°C (-4°F ~ 140°F)
Humidity	5% ~ 90% RH (no dewing allowed)
Light Level	Up to 4,500 Lux (fluorescence)
Drop Durability	Designed to withstand 1M drops
Compatibility	EAS compatible (optional)

DECODING CAPABILITY

1D Barcode	UPC/EAN/JAN, UPC-A & UPC-E, EAN-8 & EAN-13, JAN-8 & JAN-13, ISBN/ISSN, Code 39, Codabar, Code 128 & EAN 128, Code 93, ITF 2 of 5, IATA Code, MSI, China Postal Code, Code 32, Industrial 2 of 5, Standard 2 of 5, JAP, Code 11, GS1 DataBar, GS1 DataBar Limited, GS1 DataBar Expanded
------------	--

